

Matthew Morse Booker  
Department of History, NC State  
[mmbooker@ncsu.edu](mailto:mmbooker@ncsu.edu)

History and water resources planning;

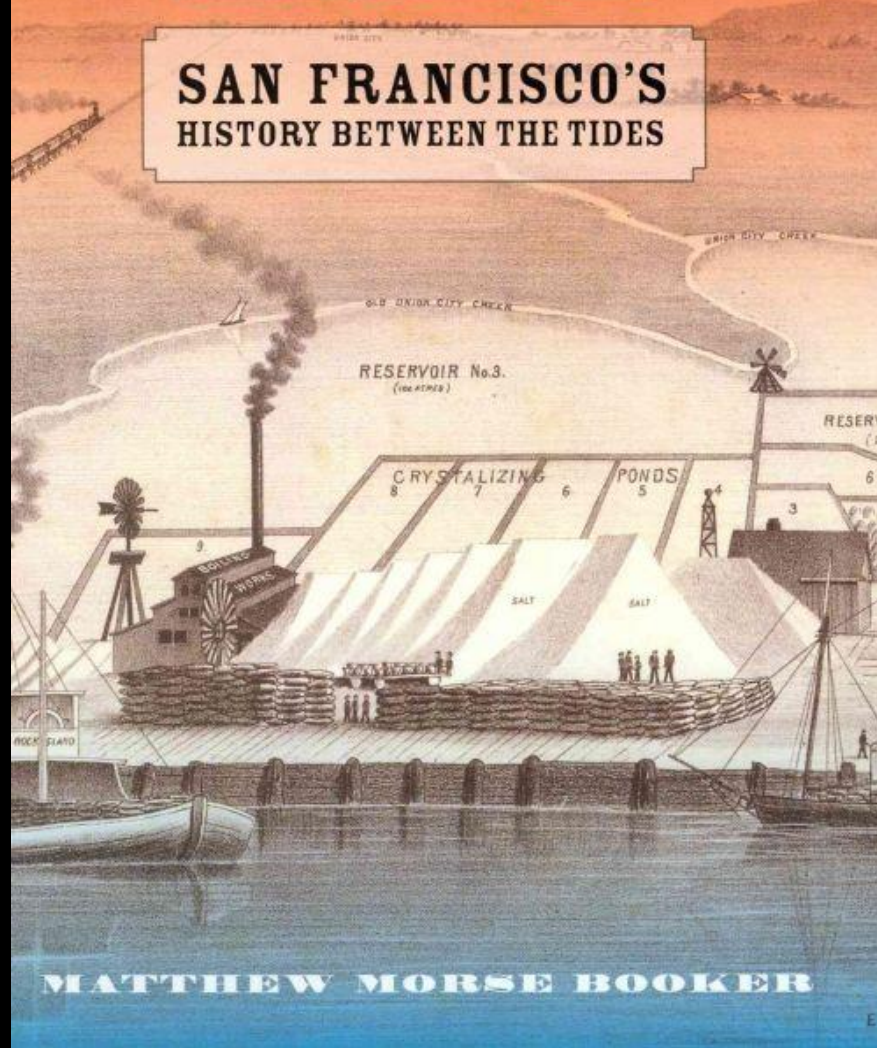
*or,*

Why do bad ideas refuse to die?

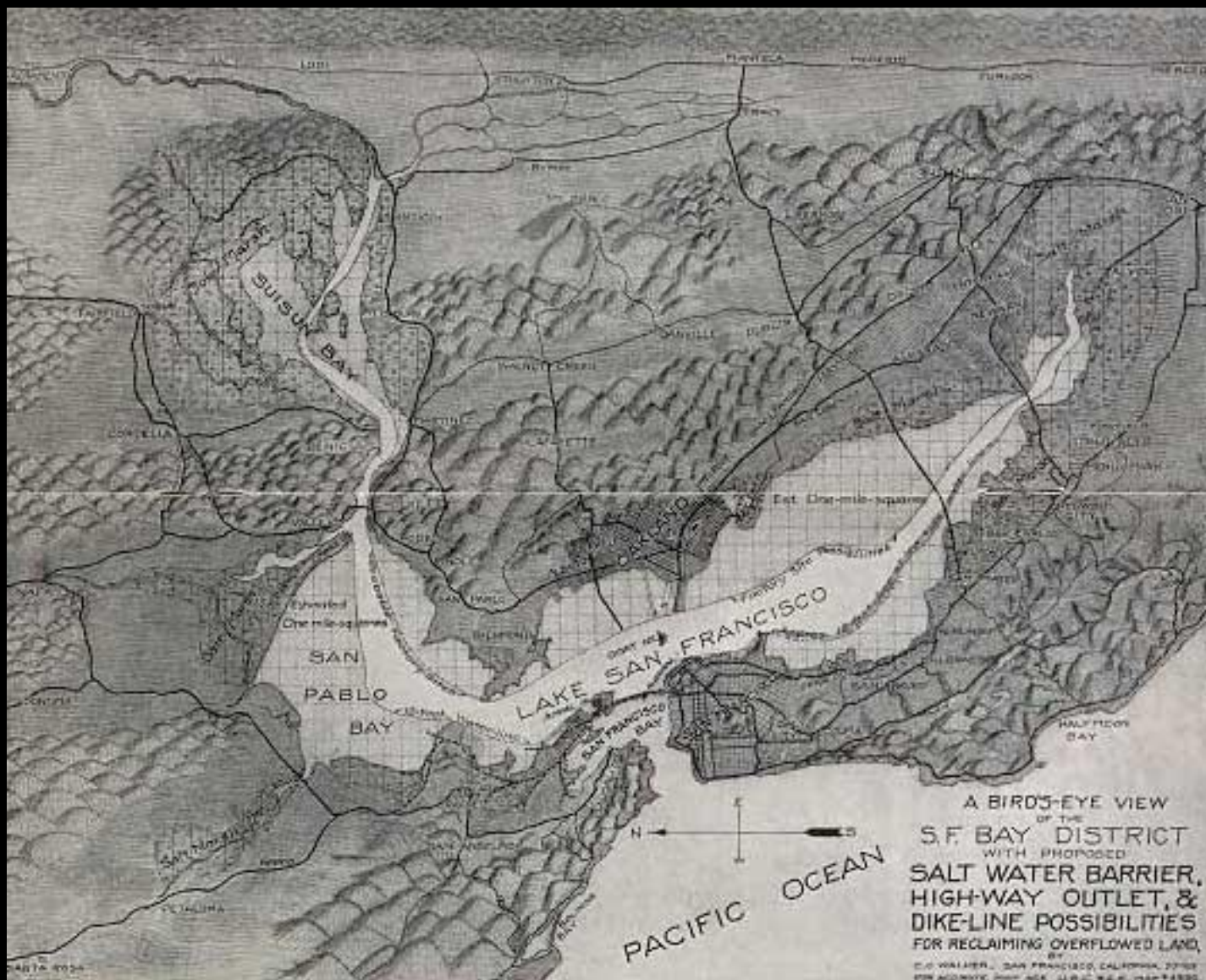


# Down by the **BAY**

**SAN FRANCISCO'S  
HISTORY BETWEEN THE TIDES**

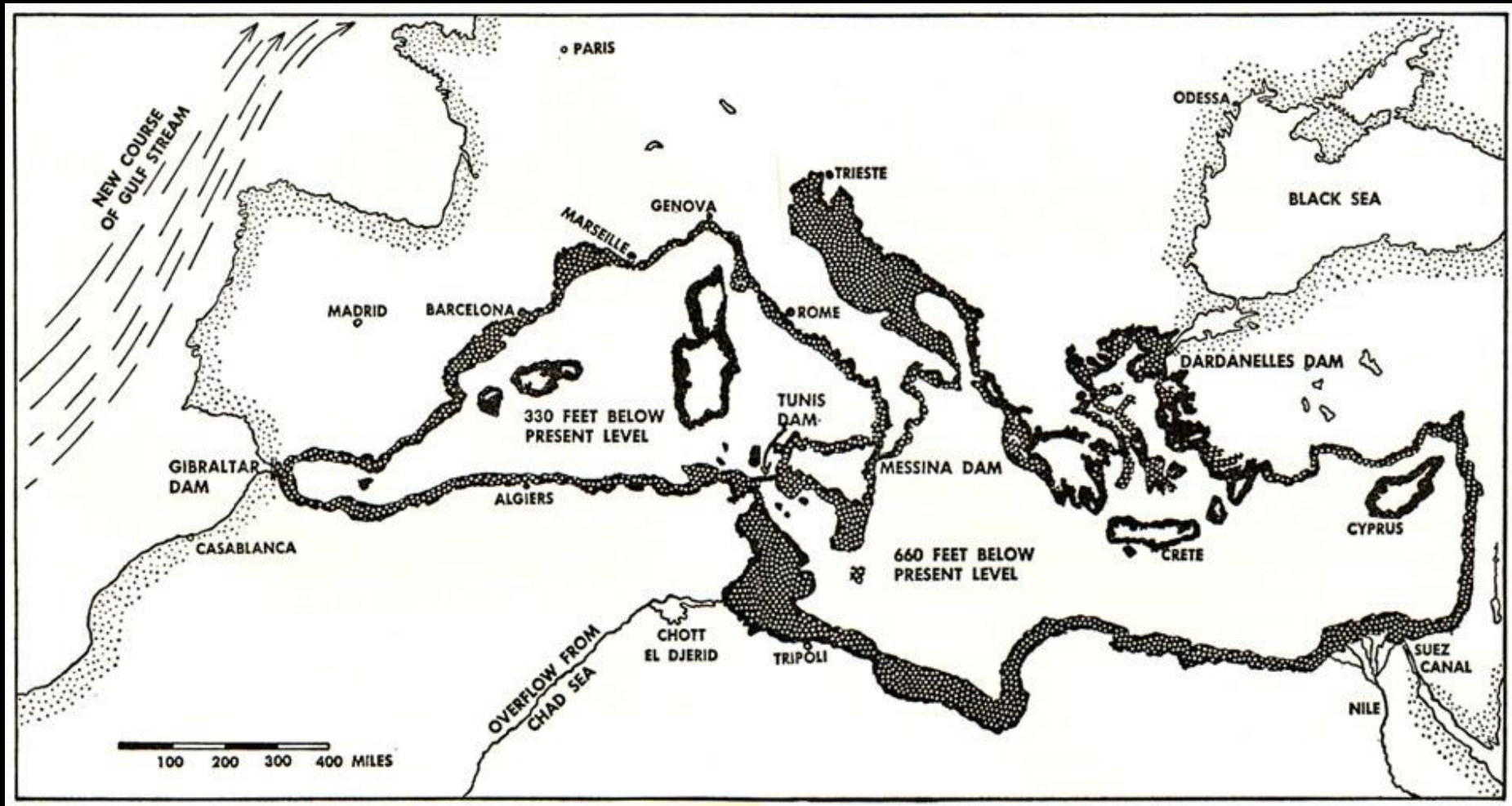


**MATTHEW MORSE BOOKER**



The C. C. Walker Plan, 1929 – “Lake San Francisco”



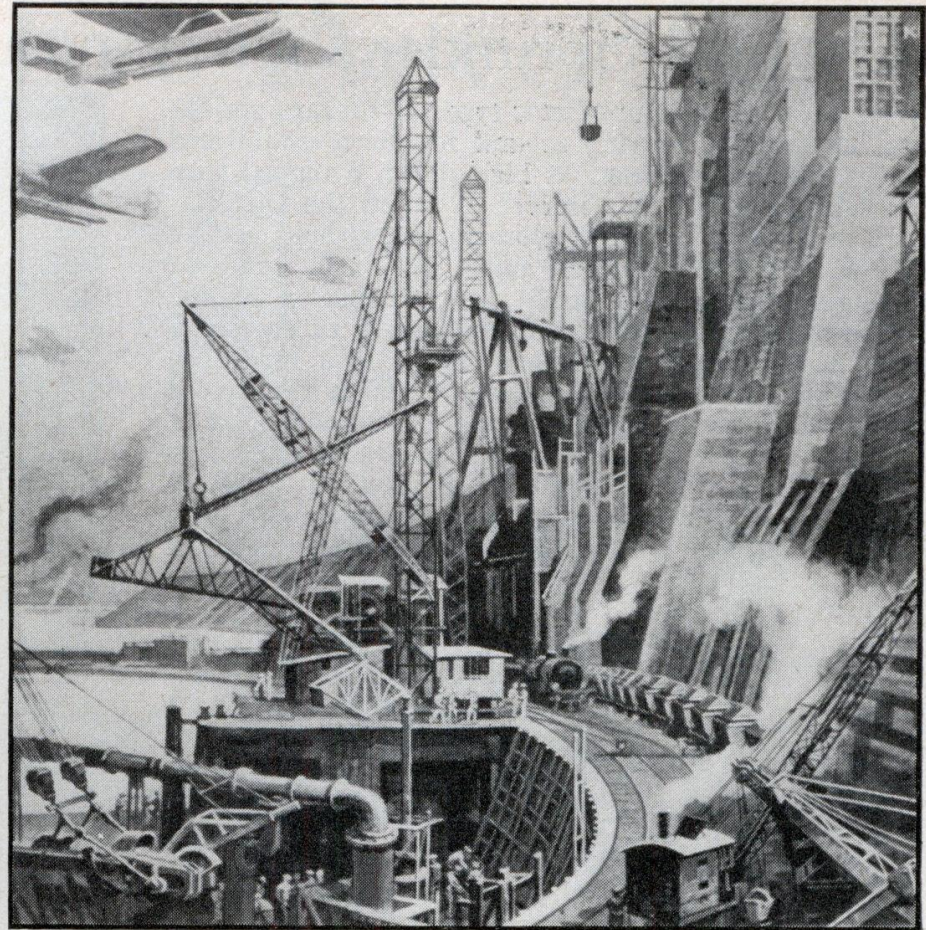


Atlantropa Project, 1920s



# Big Dam to Water Sahara

TURNING the Sahara Desert into blossoming farm land, with water drained from the Mediterranean Sea, is the ambitious project for which Hermann Sorgel, German engineer, seeks international support. He proposes to dam the Strait of Gibraltar, and then cut a canal to flood portions of the Sahara below sea level. Evaporation from the inland lake thus formed would produce rain clouds and water a vast area, he maintains. By-products of the scheme would be hydroelectric power and new land reclaimed from the Mediterranean.



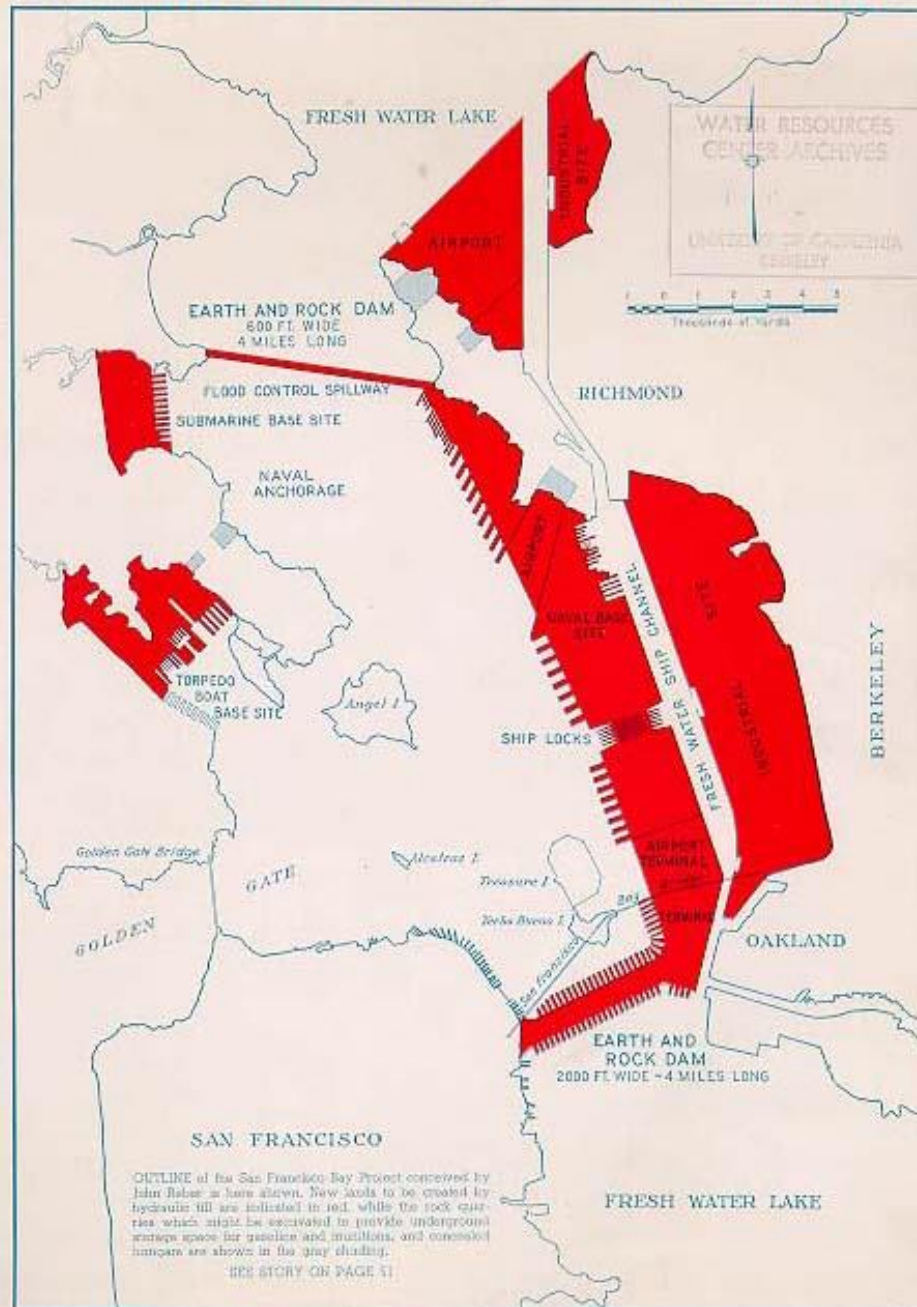
Above, artist's conception of the dam proposed for the Strait of Gibraltar and intended to help flood low parts of the Sahara Desert. At left, Herman Sorgel, originator of scheme, with model of Mediterranean



John Reber, 1887-1960  
Circus man, advertiser,  
backer of a plan to fill  
San Francisco Bay



# SAN FRANCISCO BAY PROJECT - - THE REBER PLAN



Reber Plan, 1946

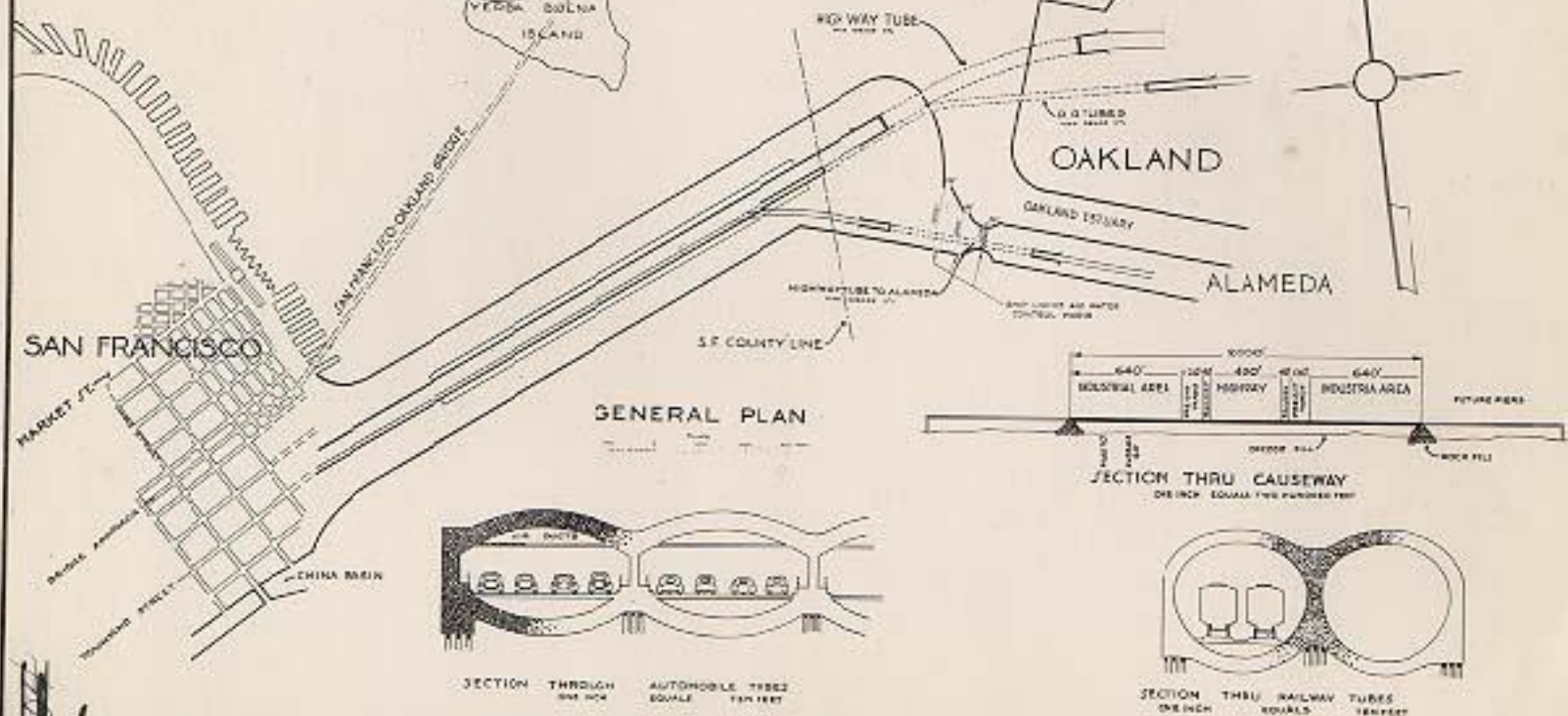


**ENGINEERING CONSULTANTS**  
LITTON & LITTON  
20001 LAKELAND BOULEVARD  
LOS ANGELES, CALIF. 90024

**INTERCONTINENTAL ENGINEERING CO.**  
1001 C STREET, N.W., WASHINGTON  
D.C. 20004

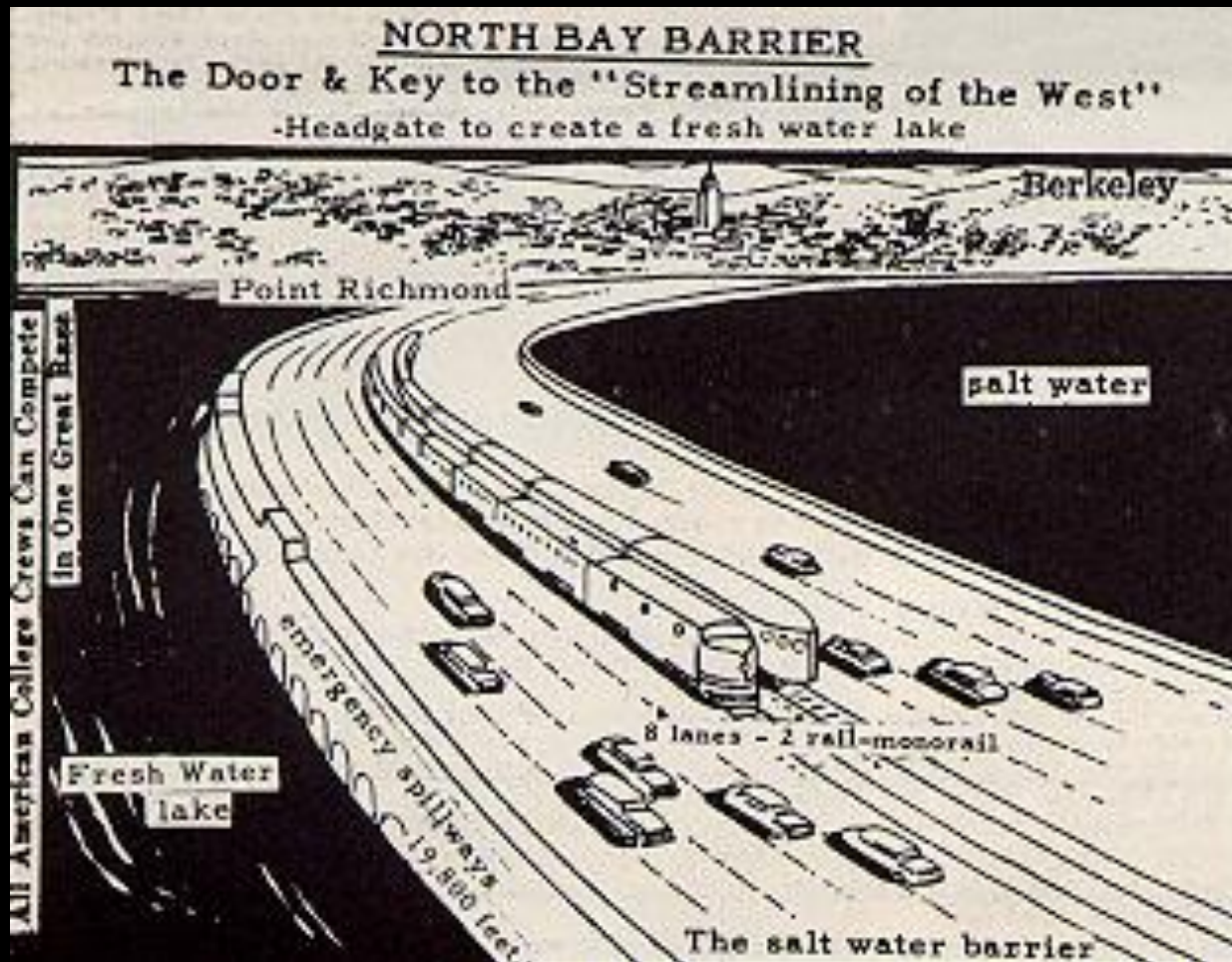
**HYDRA-TEC ENGINEERING GROUP**  
1000 N. GARDEN & A STREETS  
SANTA ANA, CALIF. 92705

**ALLIANCE ASSOCIATES INC.**  
2100 WILSON & A STREETS  
SANTA ANA, CALIF. 92705



## SOLID LAND BAY CROSSING

JOHN REBER



Detail, California Water plan 1952  
"All American college crews can compete in one great race"







Area inundated by 16-inch sea-level rise





Area inundated by 16-inch sea-level rise



Home » Climatewire »

Climatewire | Energy & Sustainability

## Tidal Gate Across San Francisco Bay Proposed to Manage Sea Level Rise

A large dam, gate or lock to manage tidal flows could help locals cope with anticipated sea level rise from climate change

By Colin Sullivan and ClimateWire | May 6, 2011 | 9

Share Email Print

SAN FRANCISCO -- A giant tidal barrier stretched across the Golden Gate is among the adaptation remedies proposed by a Bay area nonprofit to cope with anticipated sea level rise caused by climate change over the coming century.

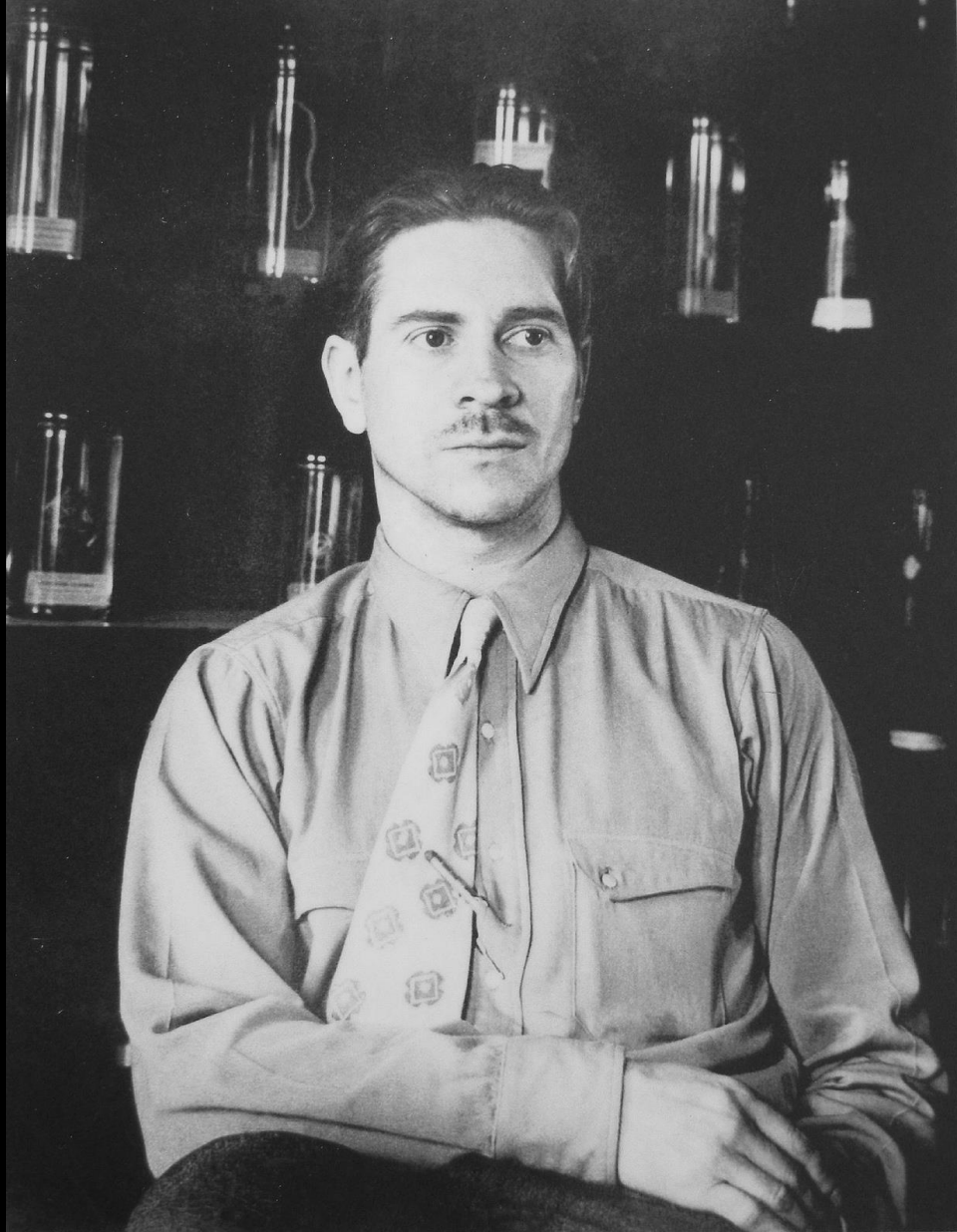
The San Francisco Planning and Urban Research Association mentioned the idea this week as part of an extensive analysis of how [global warming](#) might affect the City by the Bay, which is thought to be highly susceptible to flooding and other dangers in the decades ahead.



A large dam, gate or lock to manage tidal flows could help locals cope with anticipated sea level rise from climate change

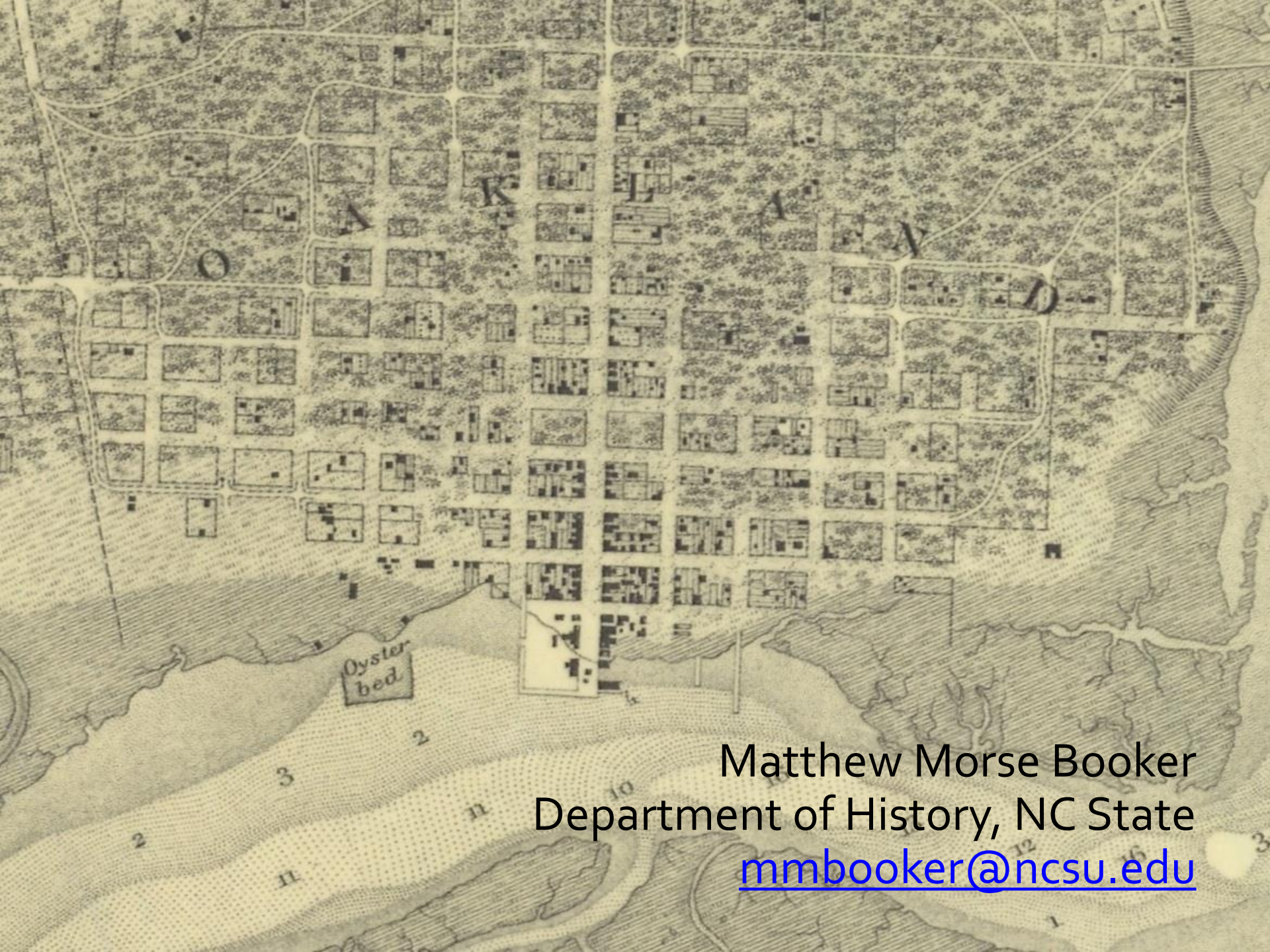
Image: Robert Campbell via Wikimedia Commons





"Too often what are thought of as disciplines operate chiefly as biases—prescribed ways of thinking and of doing, into which the professional may retreat when shocked or challenged by some anomaly." Ed Ricketts & John Steinbeck, 1940





Matthew Morse Booker  
Department of History, NC State  
[mmbooker@ncsu.edu](mailto:mmbooker@ncsu.edu)







San Francisco Bay  
Conservation and Development Commission

# SHORELINE AREAS VULNERABLE TO SEA LEVEL RISE SAN FRANCISCO BAY AREA

- Area vulnerable to an approximate 16-inch sea level rise
- Area vulnerable to an approximate 55-inch sea level rise
- No Data



SOURCE: Inundation data from Knowles, 2008. Additional salt pond elevation data by Siegel and Bachand, 2002. Aerial imagery is NAIP 2005 data.

DISCLAIMER: Inundation data does not account for existing shoreline protection or wave activity. These maps are for informational purposes only. Users, by their use, agree to hold harmless and blameless the State of California and its representatives and its agents for any liability associated with its use in any form. The maps and data shall not be used to assess actual coastal hazards, insurance requirements, or property values or be used in lieu of Flood Insurance Rate Maps issued by the Federal Emergency Management Agency (FEMA).